



Viceroy Court, 58-74 Prince Albert Road,
St Johns Wood NW8

£1,650 Per Week

NAPIER WATT

T: 0207 935 0011
E: enquiries@napierwatt.co.uk
W: napierwatt.co.uk

35 Berkeley Square, Mayfair, London, W1J 5BF







Description

Stunning three-bed with a balcony overlooking Regents Park. This lateral apartment of 1,516sq ft is set on the first floor (with lift) and boasts 24-hour concierge, air-conditioning, parquet flooring. The property comprises two vast bedrooms, a family bathroom, guest cloakroom, a third bedroom with en-suite shower, separate modern kitchen, spacious living room with dining area and a balcony. Air-conditioning is installed in the living room and in the second bedroom, which also has direct access to the terrace. Viceroy Court is a highly regarded portered building set behind a sweeping carriage driveway and landscaped communal gardens. Residents enjoy 24-hour uniformed concierge, along with an award winning communal roof terrace with far-reaching views over the London skyline. First-come, first-served off-street parking is also available for residents. Available, furnished.

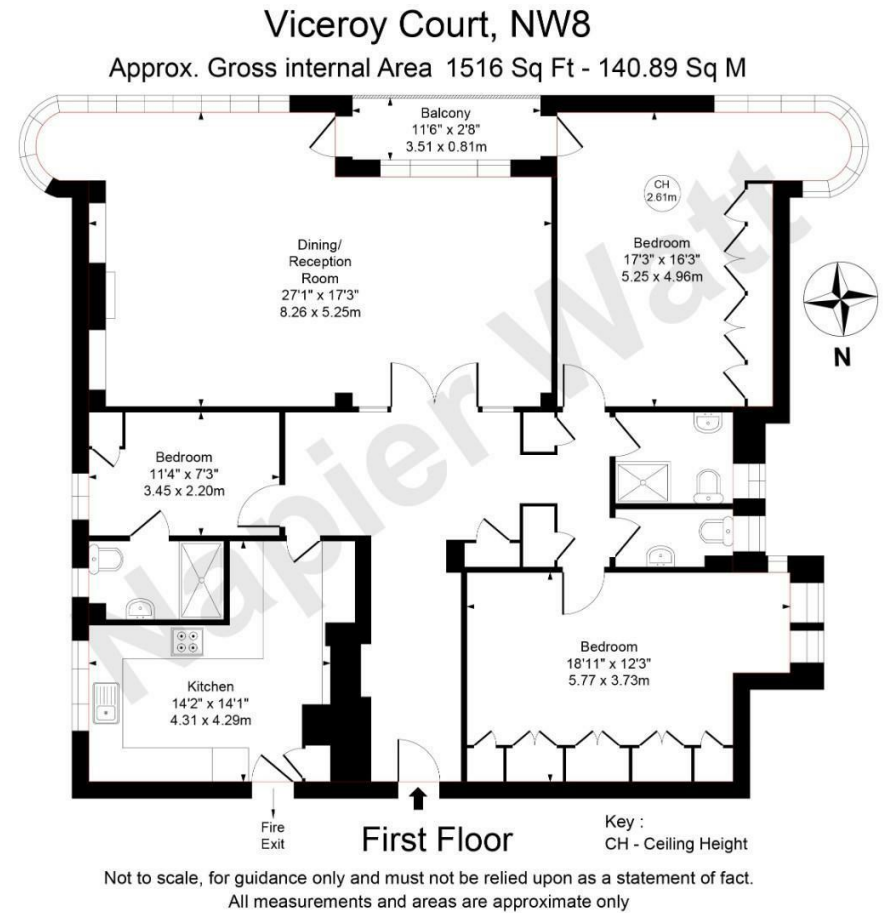
3 Bedrooms : 2 Bathrooms : Guest WC : AC : Balcony : Lift : 24-Hour Concierge : Communal Roof Terrace : Communal Garden : EPC Rating C

Key Features

- 24-HOUR UNIFORMED CONCIERGE
- PASSENGER LIFT
- BALCONY
- AIR-CONDITIONING
- VIEWS OF REGENTS PARK

Terms

Fees & Charges: Tenancies exceeding £100,000 Per annum £480 inc VAT, Tenancies where a company is a tenant £480 inc VAT



IMPORTANT: We would inform prospective purchasers that these sales particulars have been prepared as a general guide only. A detailed survey has not been carried out, nor the services, appliances and fittings tested. Room sizes should not be relied upon for furnishing purposes and are approximate. If floor plans are included, they are for guidance only and illustration purposes only and may not be to scale. If there are any important matters likely to affect your decision to buy, please contact us before viewing the property.